



Englefield Green Surrey

£5,500 Per calendar month

BUCKINGHAM



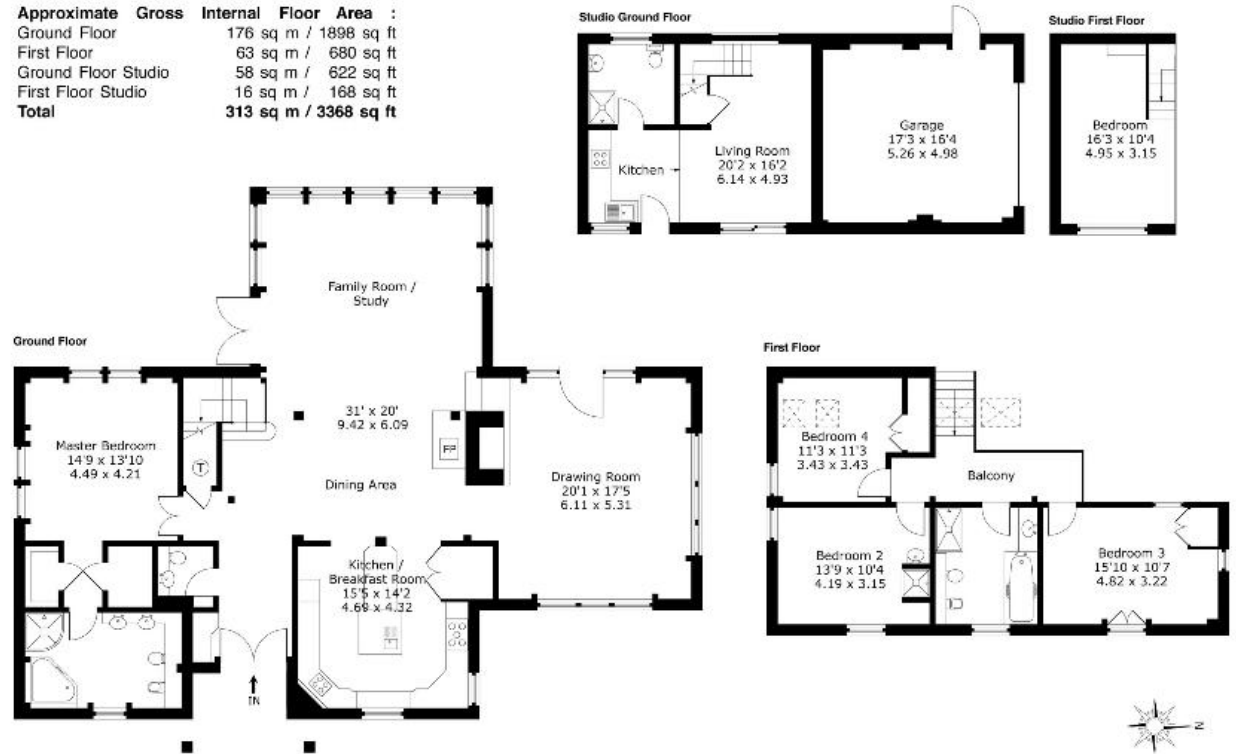


**A unique, characterful four bedroom detached cottage with self-contained annexe in a delightful position overlooking Englefield Green's village green. Delightful mature, private gardens and ample driveway parking. Unfurnished. Council Tax Band G. EPC:D63.**

Fees for tenants: Holding fee equivalent to one weeks rent, amendments to Tenancy Agreement after the document has been signed £50, change of sharer £50, stamp duty land tax (if total rent exceeds £125,000), 3% above the base rate of Bank of England per annum (calculated daily) for late/unpaid/returned rent payments, lost/damaged/broken keys/fobs or security devices at cost, deposit of five weeks rent if annual rent is less than £50,000 or six weeks rent if annual rent is £50,000 or more, all including VAT.

### Number One, Englefield Green

Approximate	Gross	Internal	Floor Area :
Ground Floor	176	sq m /	1898 sq ft
First Floor	63	sq m /	680 sq ft
Ground Floor Studio	58	sq m /	622 sq ft
First Floor Studio	16	sq m /	168 sq ft
<b>Total</b>	<b>313</b>	<b>sq m /</b>	<b>3368 sq ft</b>



6 Station Approach Virginia Water Surrey GU25 4DL  
 01344 845050  
[www.buckinghamams.com](http://www.buckinghamams.com)  
[lettings@buckinghamams.com](mailto:lettings@buckinghamams.com)



**BUCKINGHAMMS**