



23 GILLESPIE HOUSE
VIRGINIA WATER

BUCKINGHAMS



23 Gillespie House

Holloway Drive • Virginia Water • Surrey • GU25 4SU

£795,000

A superbly presented three bedroom second floor apartment enjoying distant views to the rear and excellent facilities on the exclusive Virginia Park gated development.

- | | |
|---|--|
| <ul style="list-style-type: none">• THREE DOUBLE BEDROOMS• COMMUNAL POOL, GYM, TENNIS COURT• SHORT WALK TO VILLAGE CENTRE• SUPERB WALLED GROUNDS | <ul style="list-style-type: none">• LARGE DRAWING/DINING ROOM• GATED DEVELOPMENT, 24 HR SECURITY• LONDON WATERLOO 50 MINS APPROX.• DISTANT REAR VIEWS |
|---|--|



RECEPTION HALL • DRAWING/DINING ROOM • MASTER BEDROOM WITH EN SUITE BATH & SHOWER ROOM • TWO FURTHER DOUBLE BEDROOMS • BATHROOM • LIFT • TWO UNDERGROUND PARKING SPACES & STORE ROOM

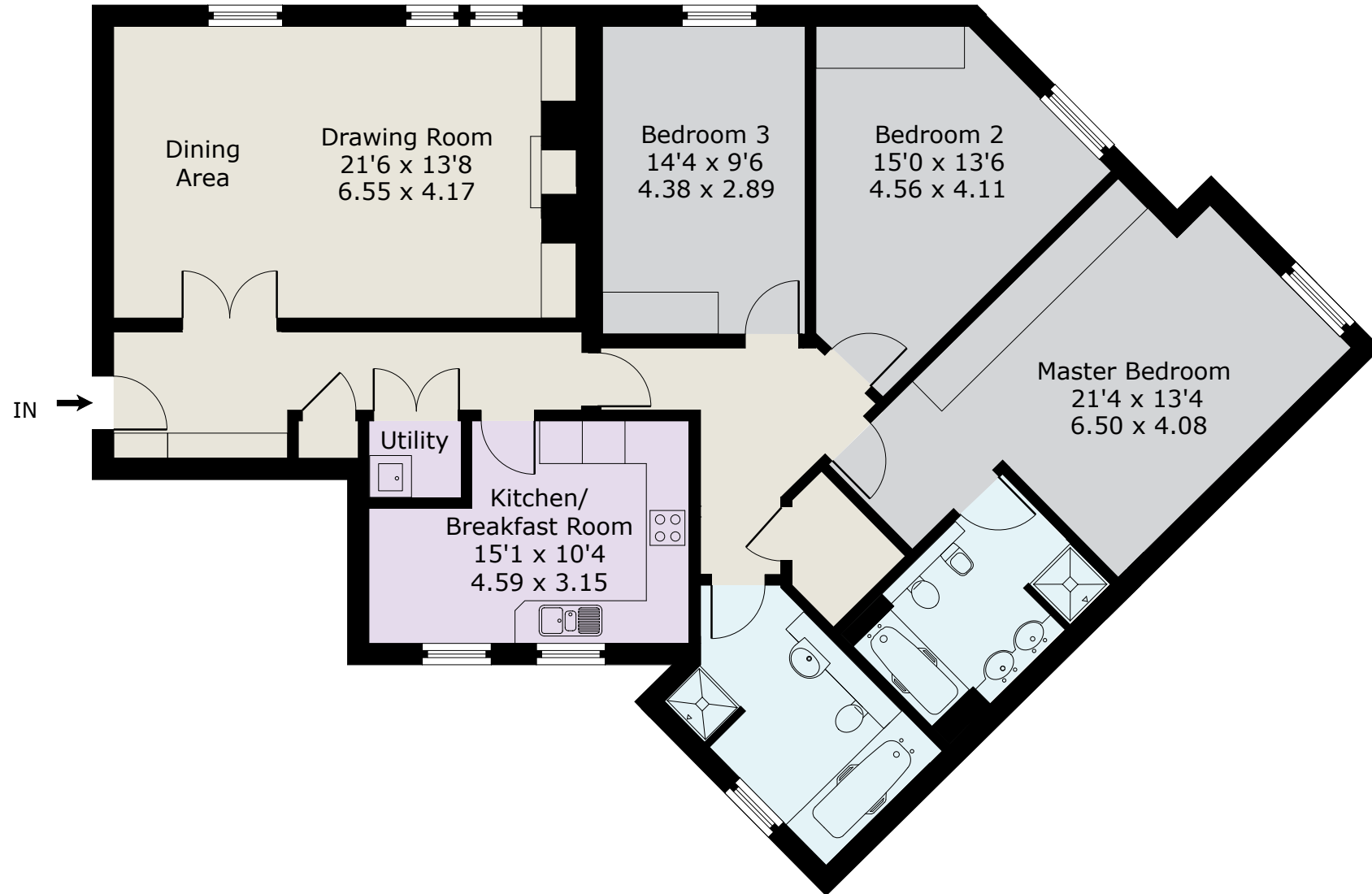
Description

23 Gillespie House is a well planned & maintained apartment, situated on this highly sought after development which offers fantastic communal facilities including 24 hour security, tennis court, indoor swimming pool and gymnasium; the general location is also ideal, being just a short walk from Virginia Water village centre shops, restaurants and rail station.

Directions

From our offices on Station Approach, Virginia Water turn right onto Christchurch Road and after crossing the rail bridge turn left into the walled and gated entrance to Virginia Park; the guards will direct you from there.

Approximate Gross Internal Floor Area :
Total 133 sq m / 1438 sq ft



EPC- C78.

Important Notice

These particulars and measurements are believed to be correct but their accuracy is not guaranteed by the Vendor or Vendor's Agents and they do not constitute any part of a contract. It is not our Company Policy to test services and domestic appliances so we cannot verify that they are in working order. The buyer is advised to obtain verification from their Solicitor or Surveyor.

Ref: 23GHB011105162 HPI ©2016 Not to Scale. Any Areas, measurements or distances given are maximum and approximate only, no decisions without checking should be made when reliant upon them.

01344 845050

BUCKINGHAMS

6 STATION APPROACH, VIRGINIA WATER, SURREY GU25 4DL • sales@buckinghams.com • www.buckinghams.com



BUCKINGHAMS