



42 ST DAVID'S DRIVE
ENGLEFIELD GREEN

BUCKINGHAMS



42 St David's Drive

Englefield Green • Surrey • TW20 0BA

Guide £1,050,000
Freehold

A very spacious & well designed five bedroom townhouse enjoying a bright, South Easterly facing landscaped rear garden within the highly sought after Wentworth Gate development.

- VERY SPACIOUS & ADAPTABLE TOWNHOUSE
- 4 DOUBLE BEDROOMS, 3 BATH/SOWER ROOMS
- ACS EGHAM INT SCHOOL A SHORT WALK
- SHORT DRIVE TO EGHAM & VIRGINIA WATER CENTRES
- FITTED STUDY/FIFTH DOUBLE BEDROOM
- LARGE REAR GARDEN
- CLOSE TO WINDSOR GREAT PARK
- LONDON WATERLOO FROM 43 MINUTES

RECEPTION HALL • CLOAKROOM • SPACIOUS DRAWING ROOM • KITCHEN/BREAKFAST ROOM • DINING ROOM • MASTER BEDROOM WITH DRESSING AREA & ENSUITE BATHROOM • FOUR FURTHER BEDROOMS (ONE FITTED AS A STUDY) • TWO FURTHER BATH/SOWER ROOMS • INTEGRAL DOUBLE WIDTH GARAGE WITH UTILITY AREA • LARGE BLOCK PAVED DRIVEWAY • LARGE REAR GARDEN

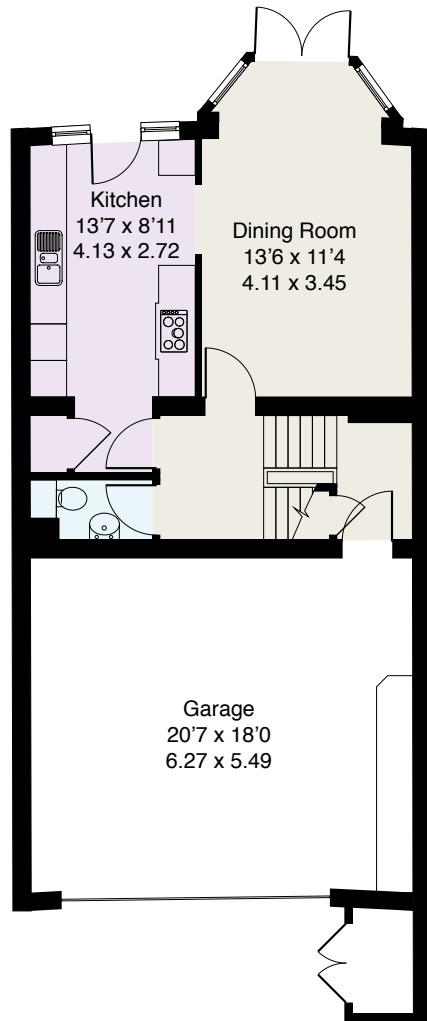
Description

A well proportioned townhouse constructed by Barratt Homes in 1998 providing extremely good, adaptable accommodation & situated in this attractive & prominent crescent overlooking attractive water gardens. Properties on this development enjoy gated entry with manned 24 hour security. Wentworth Gate is conveniently situated a short walk to ACS Egham international school, within a short drive of both Virginia Water and Egham shops, restaurants and mainline rail stations serving London Waterloo in about 50 & 43 minutes respectively plus Heathrow Airport is about 10 miles away and Central London 25 miles.

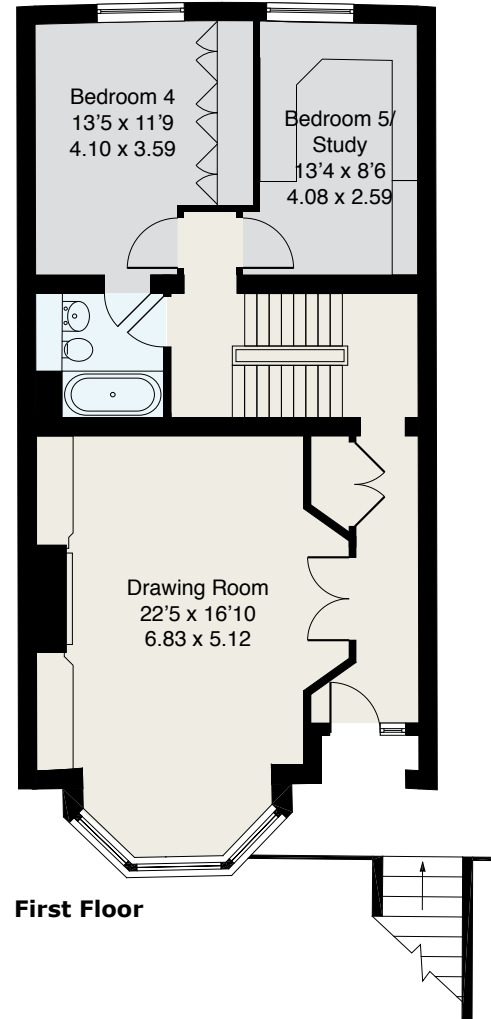
Directions

From our offices on Station Approach, Virginia Water, turn left onto Christchurch Road and proceed to the A30 London Road. Turn right onto the A30 and proceed towards Egham. After approximately one mile, shortly after passing the traffic lights with the right hand turning for ACS Egham international school and just after the left hand turn for Wick Road, the entrance to Wentworth Gate will be found on the right.

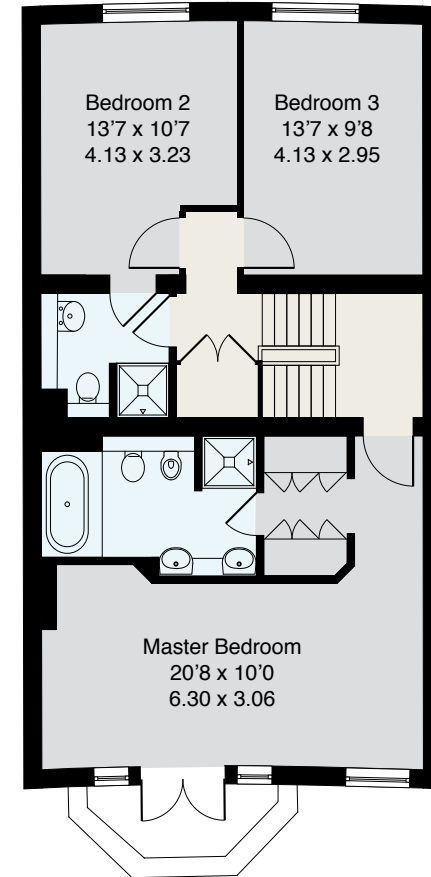
Approximate Gross Internal Floor Area :	
Ground Floor	80.11 sq m / 862 sq ft
First Floor	78.89 sq m / 849 sq ft
Second Floor	76.28 sq m / 821 sq ft
Total	235.28 sq m / 2532 sq ft



Ground Floor



First Floor



Second Floor

EPC: C70.

Important Notice

These particulars and measurements are believed to be correct but their accuracy is not guaranteed by the Vendor or Vendor's Agents and they do not constitute any part of a contract. It is not our Company Policy to test services and domestic appliances so we cannot verify that they are in working order. The buyer is advised to obtain verification from their Solicitor or Surveyor.

Ref: 42SDDDB010604223 HPI ©2022 Not to Scale. Any Areas, measurements or distances given are maximum and approximate only, no decisions without checking should be made when reliant upon them.

01344 845050





BUCKINGHAMS