



14 OAK TREE CLOSE

VIRGINIA WATER

BUCKINGHAMS



14 Oak Tree Close

Virginia Water • Surrey • GU25 4JF

£845,000

Freehold

A three bedroom link detached bungalow offering spacious living accommodation & ample scope for enlargement/alteration, enjoying a large South Easterly facing rear garden in a popular residential location.

- BRIGHT & AIRY THREE BEDROOM BUNGALOW
- AMPLE SCOPE FOR ALTERATION/EXTENSION
- EASY ACCESS TO LOCAL SHOPS
- LONDON WATERLOO FROM 43 MINS
- LARGE, SOUTH EAST FACING REAR GARDEN
- VERY POPULAR RESIDENTIAL LOCATION
- VILLAGE CENTRE & RAIL STATION WITHIN 1 MILE
- COUNCIL TAX BAND G, ALL MAINS SERVICES

LARGE RECEPTION HALL • IMPRESSIVE LIVING/DINING ROOM • KITCHEN/BREAKFAST ROOM • UTILITY ROOM • MASTER BEDROOM WITH DRESSING ROOM • SECOND DOUBLE BEDROOM • THIRD BEDROOM/STUDY • FAMILY BATH & SHOWER ROOM • DRIVEWAY TO ATTACHED SINGLE GARAGE • LARGE GARDENS TO FRONT & REAR

Description

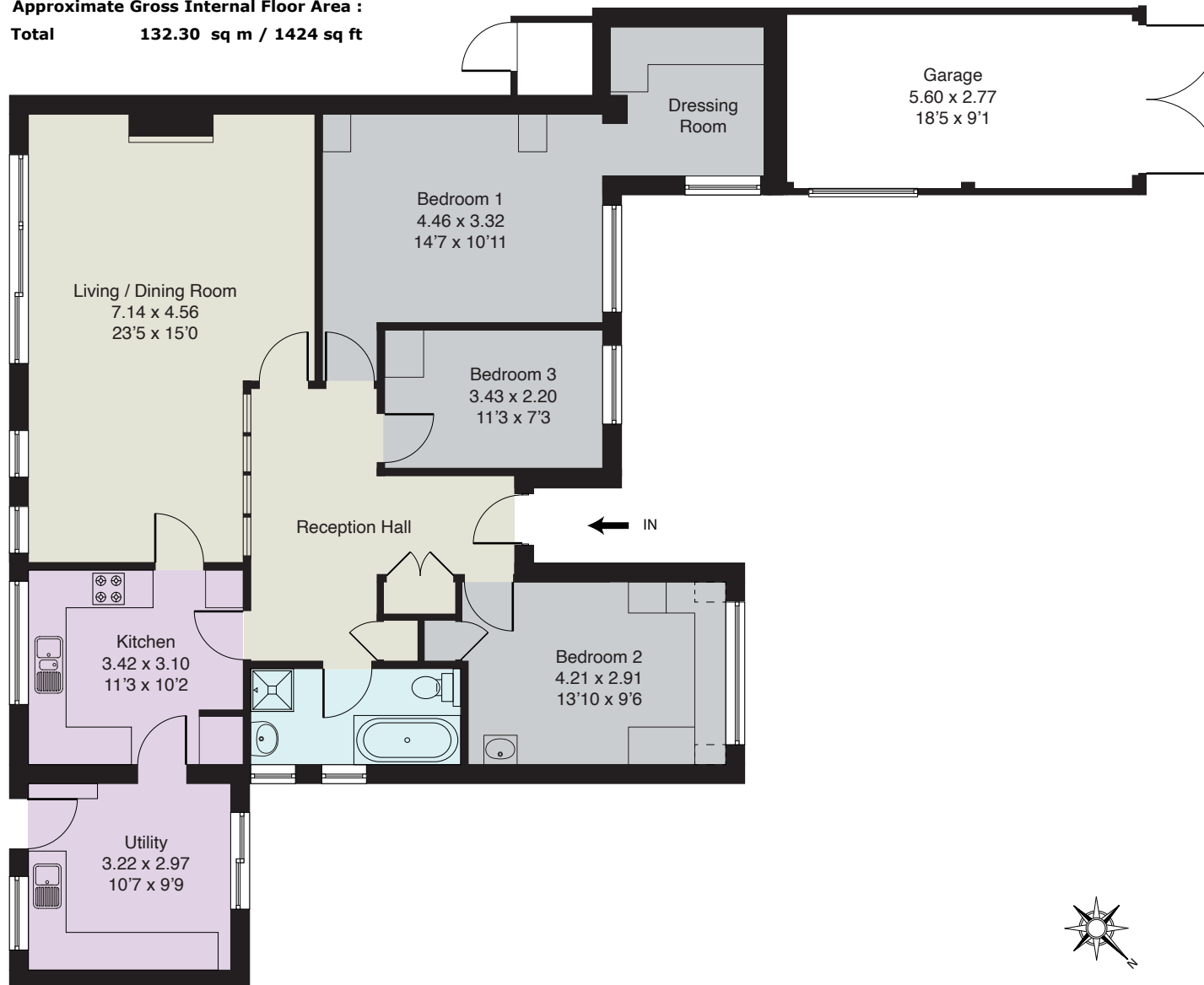
This property is an excellent proposition - a well maintained bungalow with spacious accommodation which enjoys mature gardens on a plot measuring 0.17 acres; in our opinion the property is an excellent choice for someone searching for a single storey home but it also offers huge potential to greatly enlarge should a purchaser so wish (subject to the usual planning consents).

Oak Tree Close is a sought after residential road, which has always been very popular for families looking for a long term move; the King George V recreation ground is just a short stroll away, local shops are also very close by and the village centre shops, restaurants and rail station are within a mile.

Directions

From our offices on Station Approach, Virginia Water, turn right onto Christchurch Road and after passing the rail station on the right, at the traffic lights turn right into Trumpsgreen Road. Follow the road down the hill and under the railway bridge, pass the parade of shops on the right and after cresting the brow of a small hill the left hand turn for Oak Tree Close will be found on the left, opposite the King George V recreation ground. turn right into the first cul de sac and no.14 will be found immediately on the left hand corner.

Approximate Gross Internal Floor Area :
Total 132.30 sq m / 1424 sq ft



EPC: C69.

Important Notice

These particulars and measurements are believed to be correct but their accuracy is not guaranteed by the Vendor or Vendor's Agents and they do not constitute any part of a contract. It is not our Company Policy to test services and domestic appliances so we cannot verify that they are in working order. The buyer is advised to obtain verification from their Solicitor or Surveyor.

Ref: 14OTCB011612243 HPI ©2024 Not to Scale. Any Areas, measurements or distances given are maximum and approximate only, no decisions without checking should be made when reliant upon them.



BUCKINGHAMS