



Virginia Water

£3,000 Per calendar month

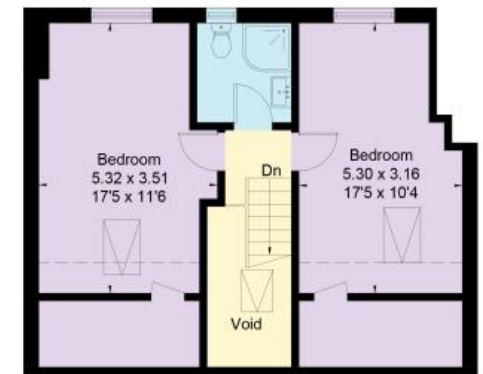
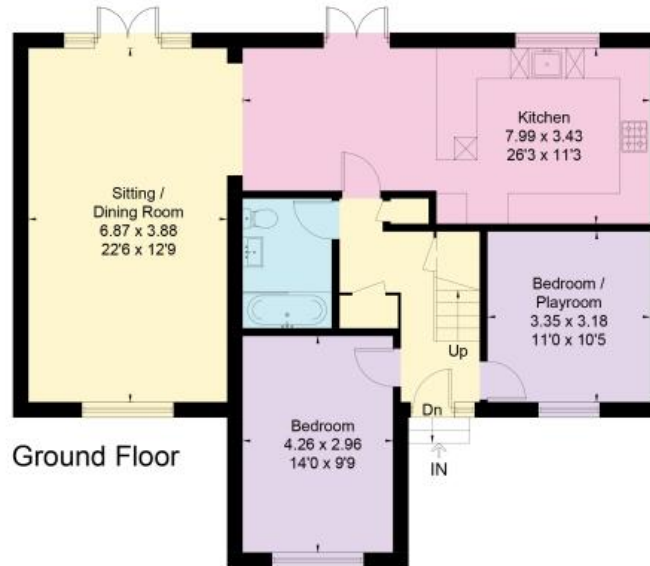
BUCKINGHAMS



**An attractive chalet style four bedroom semi-detached house situated in sought after Virginia Water. A few minutes walk to one of Virginia Water's shopping parades and a 15 minute walk to Virginia Water train station. Landscaped garden with patio. Driveway parking. Unfurnished. EPC:59D. Council Tax Band F. Pets Co**

Fees for tenants: Holding fee equivalent to one weeks rent, amendments to Tenancy Agreement after the document has been signed £50, change of sharer £50, stamp duty land tax (if total rent exceeds £125,000), 3% above the base rate of Bank of England per annum (calculated daily) for late/unpaid/returned rent payments, lost/damaged/broken keys/fobs or security devices at cost, deposit of five weeks rent if annual rent is less than £50,000 or six weeks rent if annual rent is £50,000 or more, all including VAT.

Approximate Floor Area = 141.6 sq m / 1524 sq ft



This floor plan has been drawn in accordance with RICS Property Measurement 2nd edition. All measurements, including the floor area, are approximate and for illustrative purposes only. @fourwalls-group.com #79940

6 Station Approach Virginia Water Surrey GU25 4DL

01344 845050

www.buckingham.com

lettings@buckingham.com



**BUCKINGHAMS**