



20 PINEL CLOSE

VIRGINIA WATER

BUCKINGHAMS



20 Pinel Close

Virginia Water • Surrey

GU25 4SP

£965,000

Freehold



A superbly presented three storey townhouse enjoying a bright rear garden of Easterly aspect, situated on the exclusive Virginia Park gated development in the heart of the village.

- | | |
|-------------------------------------|--|
| • EXCLUSIVE PRIVATE GATED ESTATE | • 4 BEDROOMS, 3 BATH/SOWER ROOMS |
| • THREE RECEPTION ROOMS | • 24 HOUR MANNED SECURITY |
| • COMMUNAL POOL, GYM & TENNIS COURT | • COUNCIL TAX BAND G, ALL MAINS SERVICES |
| • SHORT WALK TO VILLAGE CENTRE | • 2025 SERVICE CHARGE £5,156.07 |

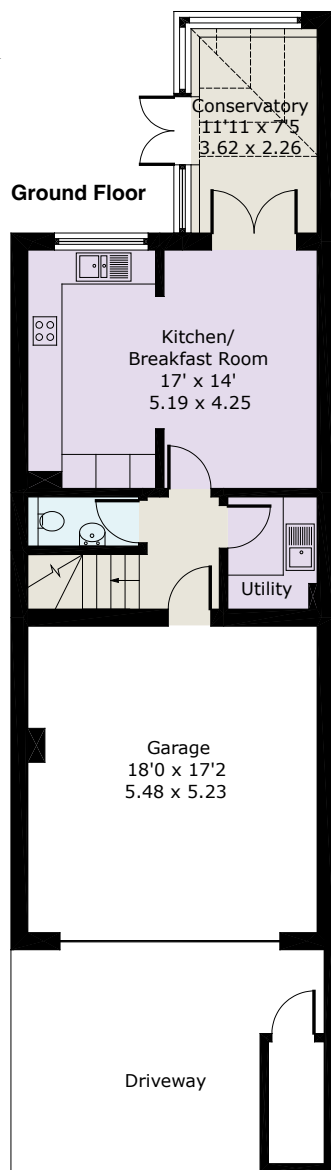
RECEPTION HALL • CLOAKROOM • DRAWING ROOM • DINING ROOM • CONSERVATORY • LOVELY FITTED KITCHEN • UTILITY ROOM • MASTER BEDROOM WITH EN SUITE BATH & SHOWER ROOM • TWO GUEST BEDROOMS BATHROOM • FAMILY ROOM/FOURTH BEDROOM WITH ADJACENT SHOWER ROOM • DOUBLE GARAGE • ATTRACTIVE GARDEN • SUPERB COMMUNAL FACILITIES

Description

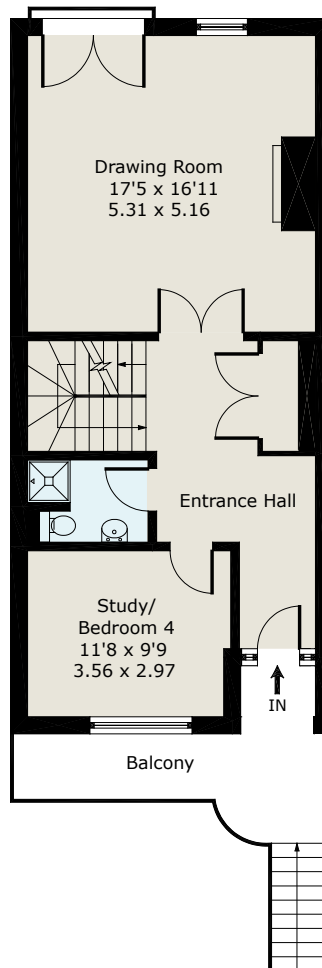
20 Pinel Close is a superb townhouse which has been extremely well maintained by the present owners; the property enjoys a private walled rear garden with pedestrian rear access and is situated in a tucked away location at the end of a quiet close on this highly sought after gated development, with outstanding communal facilities including tennis court, indoor swimming pool and gymnasium.

Directions

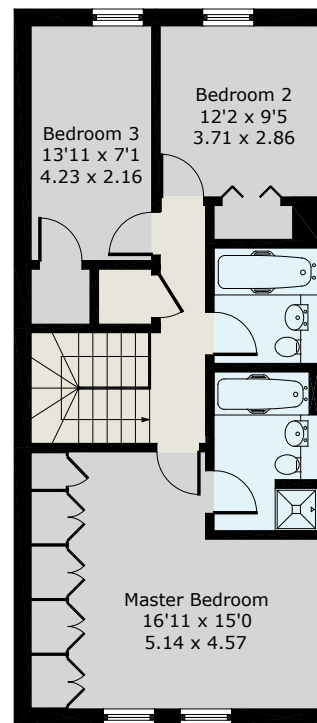
From our offices on Station Approach, Virginia Water, turn right onto Christchurch Road, cross the bridge with Virginia Water Rail Station on your right and turn left into the walled & gated entrance into Virginia Park; the guards will direct you from there.



First Floor



Second Floor



Approximate Gross Internal Floor Area :

Ground Floor	74 sq m / 802 sq ft
First Floor	61 sq m / 660 sq ft
Second Floor	63 sq m / 680 sq ft
Total	198 sq m / 2142 sq ft

EPC: C69.
All Mains Services

Important Notice

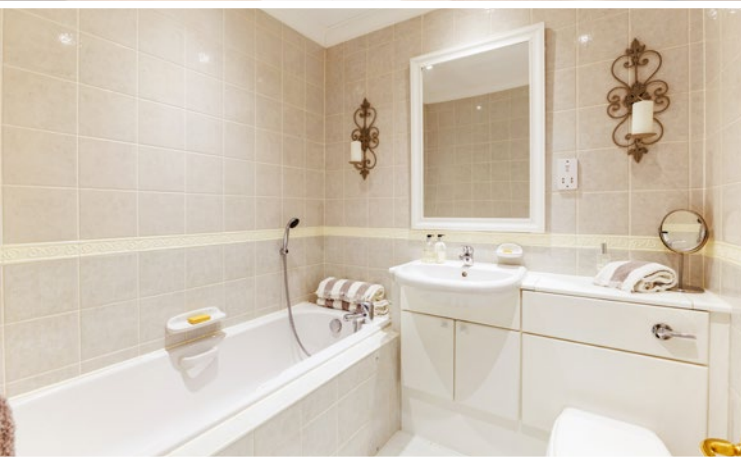
These particulars and measurements are believed to be correct but their accuracy is not guaranteed by the Vendor or Vendor's Agents and they do not constitute any part of a contract. It is not our Company Policy to test services and domestic appliances so we cannot verify that they are in working order. The buyer is advised to obtain verification from their Solicitor or Surveyor.

Ref: 53HAB011208251 HPI ©2025 Not to Scale. Any Areas, measurements or distances given are maximum and approximate only, no decisions without checking should be made when reliant upon them.

01344 845050

6 STATION APPROACH, VIRGINIA WATER, SURREY GU25 4DL • sales@buckinghamshams.com • www.buckinghamshams.com

BUCKINGHAMSHAMS



BUCKINGHAMS