



Egham, Surrey

£2,900 Per calendar month

BUCKINGHAMS

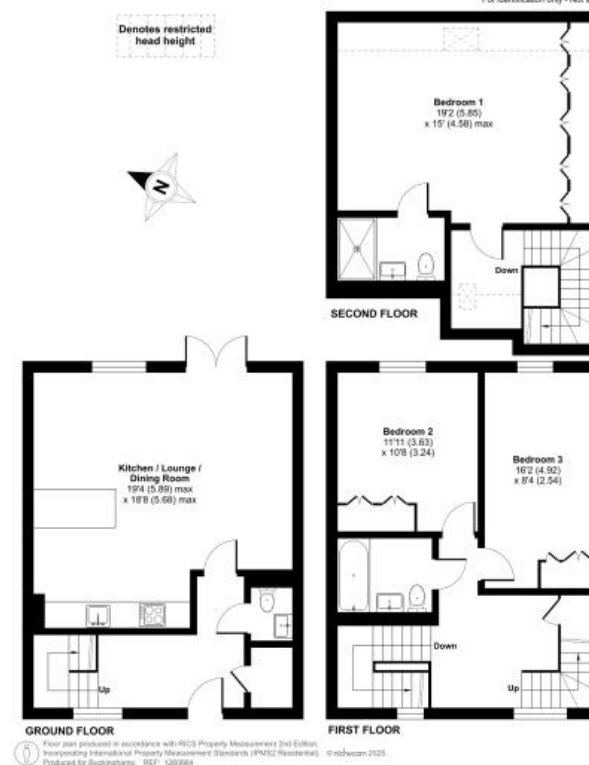


A beautifully presented three bedroom townhouse situated in a gated development conveniently located between Virginia Water and Egham. Two parking spaces incorporating a charging point for an electric/hybrid vehicle. Council Tax Band F. Unfurnished. EPC:B85. Please note that the floorplan shows

Fees for tenants: Holding fee equivalent to one weeks rent, amendments to Tenancy Agreement after the document has been signed £50, change of sharer £50, stamp duty land tax (if total rent exceeds £125,000), 3% above the base rate of Bank of England per annum (calculated daily) for late/unpaid/returned rent payments, lost/damaged/broken keys/fobs or security devices at cost, deposit of five weeks rent if annual rent is less than £50,000 or six weeks rent if annual rent is £50,000 or more, all including VAT.

Stroude Road, Egham, TW20

Approximate Area = 1338 sq ft / 124.3 sq m
Limited Use Area(s) = 55 sq ft / 5.1 sq m
Total = 1393 sq ft / 129.4 sq m
For identification only - Not to scale



6 Station Approach Virginia Water Surrey GU25 4DL
01344 845050
www.buckinghamshams.com
lettings@buckinghamshams.com



BUCKINGHAMSHAMS