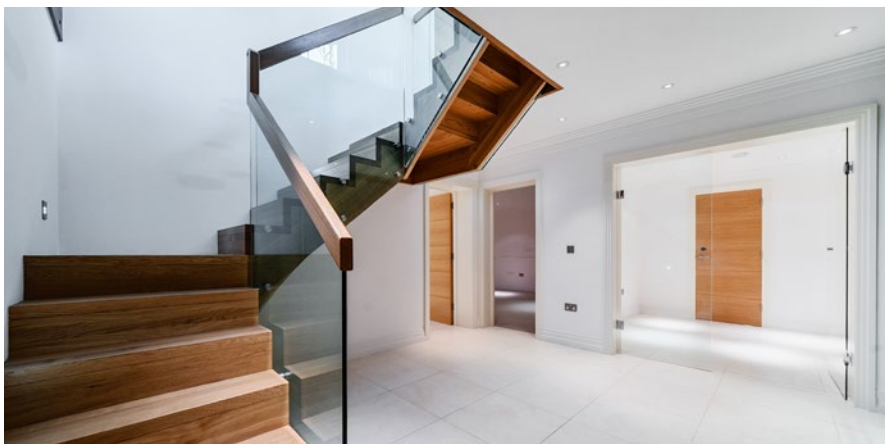




WHITE RIDGE
VIRGINIA WATER

BUCKINGHAMS



White Ridge

Pipers End • Virginia Water • Surrey • GU25 4AW

£2,850,000 Freehold

An impressive detached home offering excellent accommodation of a high specification over four floors & enjoying private South West facing gardens, close to the village centre.

- | | |
|---|---|
| • FOUR STOREY FAMILY RESIDENCE | • 5 BEDROOMS, 5 RECEPTION ROOMS, CINEMA |
| • ACCOMMODATION EXTENDING TO 5,734SQ.FT | • SOUTH WEST REAR GARDENS, 0.28 ACRE PLOT |
| • LOVELY POSITION ON THE WENTWORTH ESTATE | • 1/2 MILE TO VIRGINIA WATER VILLAGE CENTRE |
| • LONDON WATERLOO FROM 42 MINS | • 2025 WENTWORTH ROAD RATE £1,594.32 |

RECEPTION HALL • CLOAKROOM • DRAWING ROOM • DINING ROOM • STUDY • SUPERB KITCHEN/BREAKFAST/FAMILY ROOM • UTILITY ROOM • FOUR FULL BEDROOM SUITES PLUS FIFTH BEDROOM & FAMILY BATHROOM • LOWER GROUND FLOOR PROVIDING CLOAKROOM • FAMILY ROOM • GAMES ROOM/GYM • CINEMA & WINE CELLAR • DETACHED DOUBLE GARAGE

Description

White Ridge is a truly excellent home, offering well designed living & entertaining accommodation totalling 5,734sq.ft. and occupying a private plot with South West facing rear gardens. The property is situated in a highly sought after, quiet location on the Wentworth Estate yet being within easy walking distance of Virginia Water village centre with its' range of shops & restaurants plus mainline rail station with services to London Waterloo.

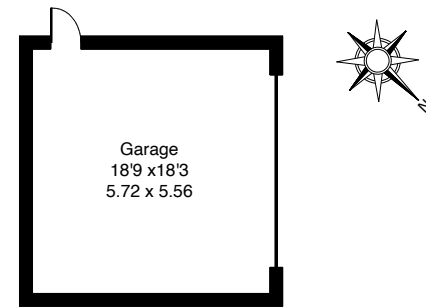
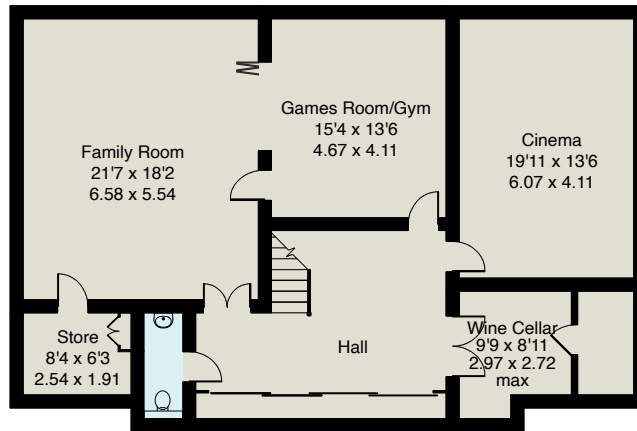
Properties offering such excellent accommodation and in a location as ideal as this rarely become available, so we would strongly recommend an internal viewing.

Directions

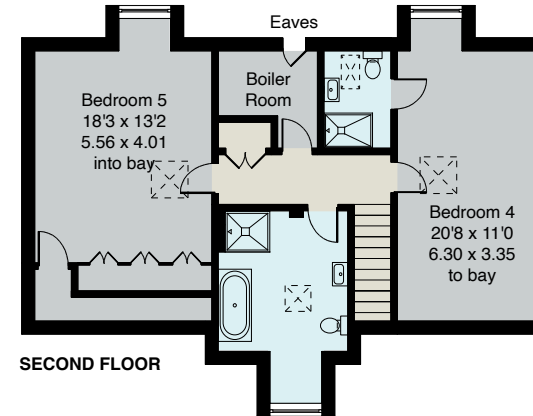
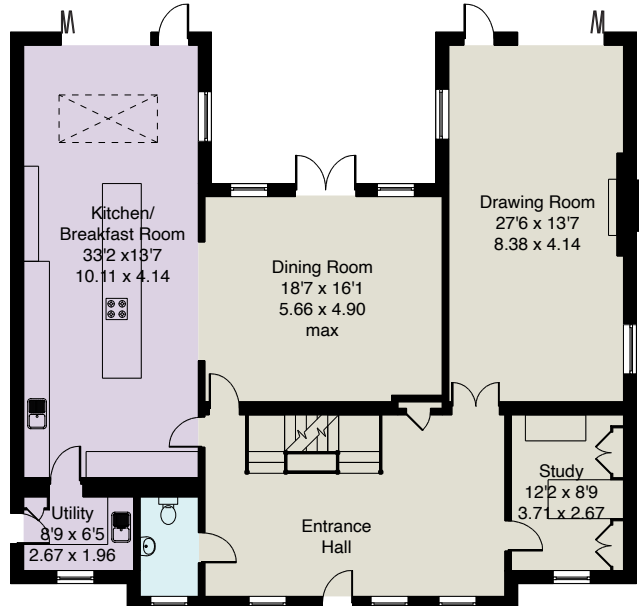
From our offices on Station Approach, Virginia Water, at the rail station end of the parade turn left onto Christchurch Road and take the first right turning into Gorse Hill Lane; turn immediately left into Gorse Hill Road, proceed past the security gate, continue past the right hand turn for Heath Rise and the left hand turn for Morella Close then follow the road, proceeding up the incline and past the second turn for Heath Rise, where the right turn for Pipers End will be found just afterwards. White Ridge will be found a short way along on the right.

Approximate Gross Internal Floor Area :
Total 532.6 sq m / 5734 sq ft

LOWER GROUND FLOOR

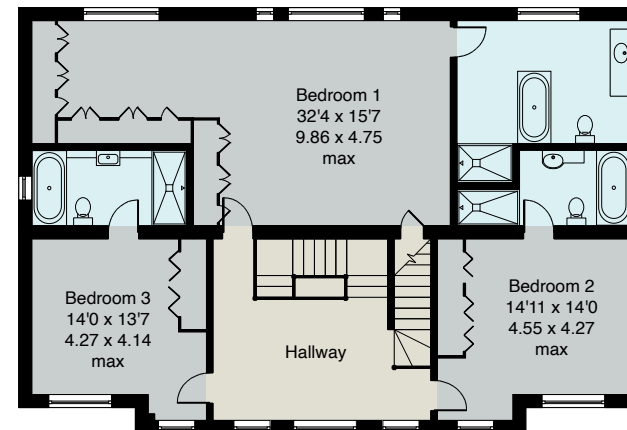


GROUND FLOOR



SECOND FLOOR

FIRST FLOOR



EPC: B83.
COUNCIL TAX BAND H
ALL MAIN SERVICES.

Important Notice

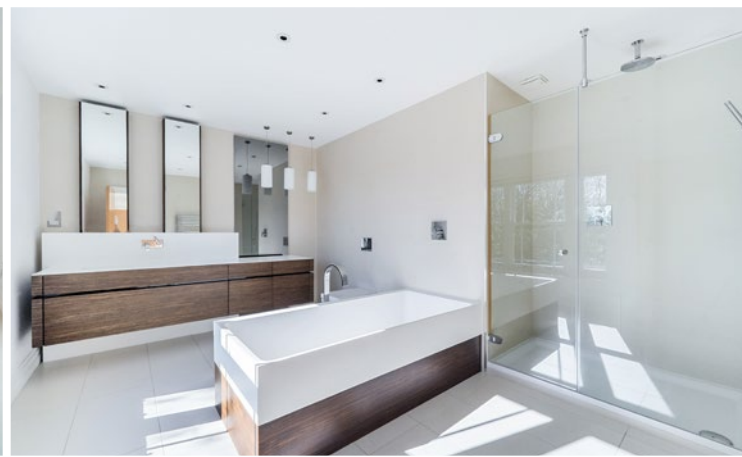
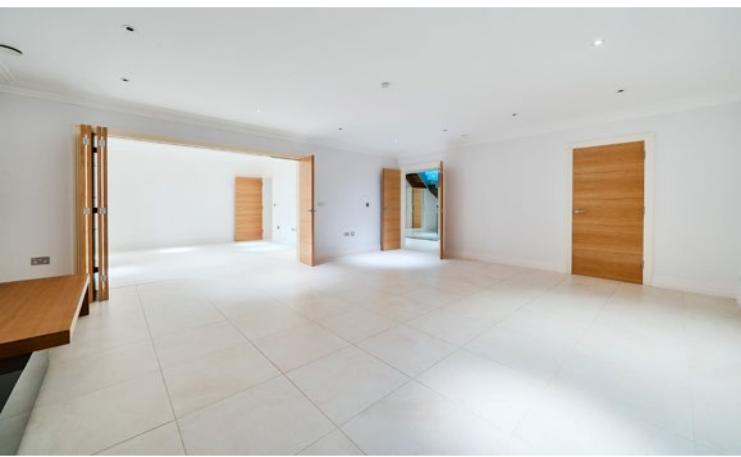
These particulars and measurements are believed to be correct but their accuracy is not guaranteed by the Vendor or Vendor's Agents and they do not constitute any part of a contract. It is not our Company Policy to test services and domestic appliances so we cannot verify that they are in working order. The buyer is advised to obtain verification from their Solicitor or Surveyor.

Ref: WRB012304252 HPI ©2025 Not to Scale. Any Areas, measurements or distances given are maximum and approximate only, no decisions without checking should be made when reliant upon them.

01344 845050

6 STATION APPROACH, VIRGINIA WATER, SURREY GU25 4DL • sales@buckingham.com • www.buckingham.com

BUCKINGHAMS



BUCKINGHAMS